

# ESBL een Food Safety Hazard?

November 17, 2015



**FOOD GROUP**

**Bert Urlings**





**PRODUCT  
RECALL**

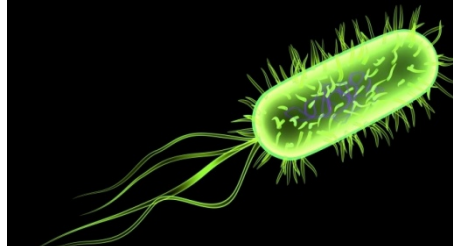
**Food  
Safety**

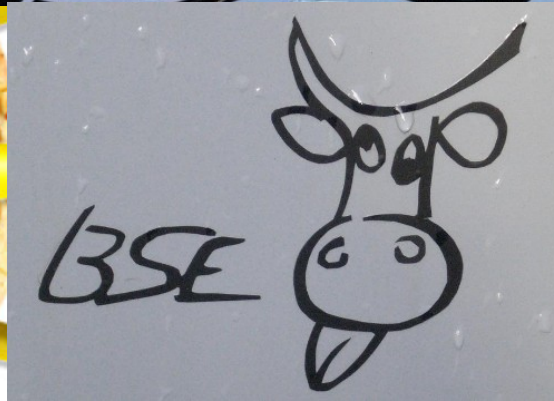
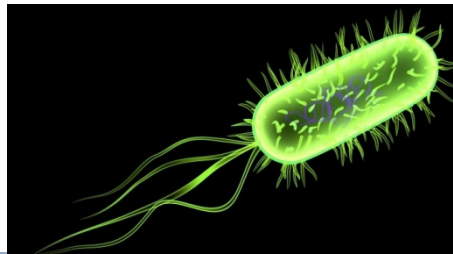
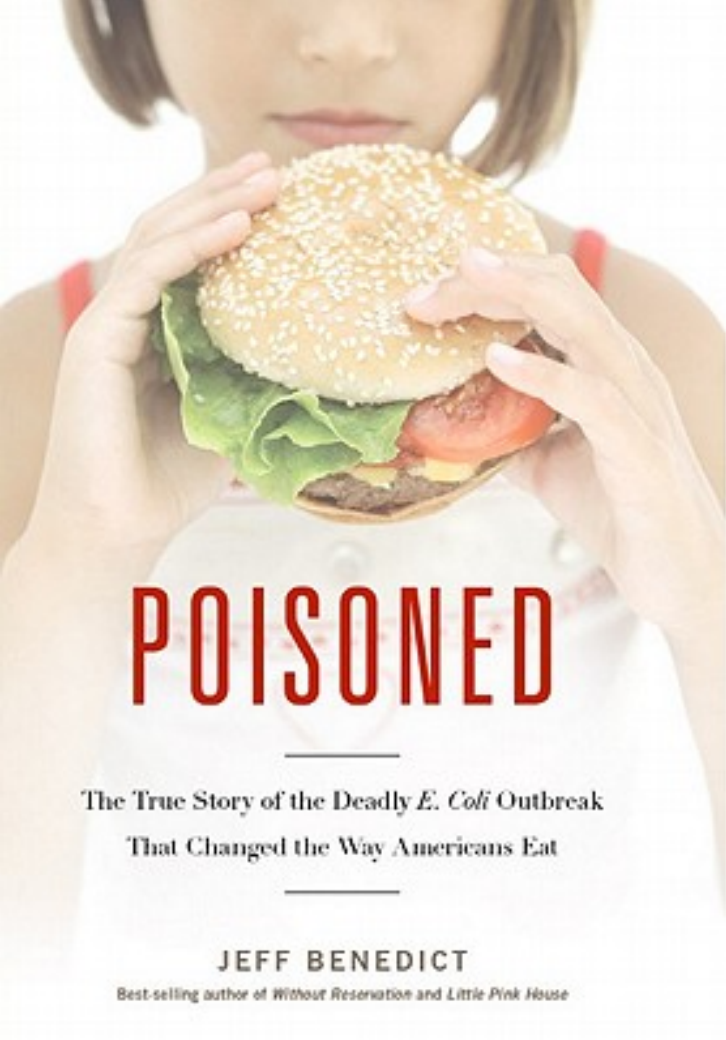


it's our business

# Zwölf Kanadier sterben nach Fleischkonsum

KRANKHEIT Bakterien  
lösten Listeriose aus.  
29 Verdachtsfälle.





# What are the issues?

## **Public health e.g.:**

- Influenza
- Q-fever
- Antibiotic resistance

## **Food safety e.g.:**

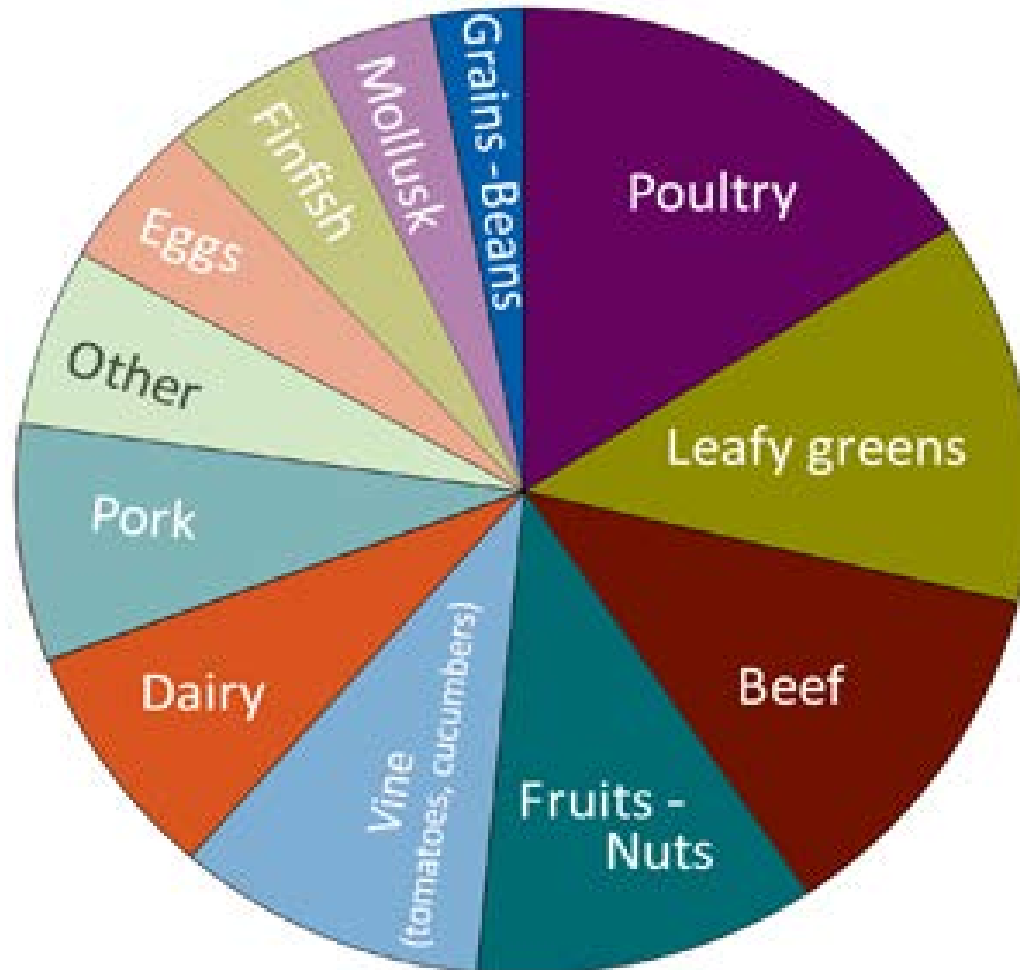
- EHEC / listeria / salmonella
- Toxoplasma gondii
- Antibiotic resistance / ESBL
- Dioxin / Aflatoxin

## **Animal welfare e.g.:**

- Castration
- Fast growing broilers
- Transport

# Food Safety / human cases

Causes of food illness in single food commodity outbreaks, 2003–2008 (CDC-Atlanta)



Get sick of  
foodborne  
disease  
(people / yr)

US: 1 in 6

China: 1 in 4

# EU trends human cases

Figure SA1. Trend in reported confirmed cases of human salmonellosis in the EU, 2008–2011

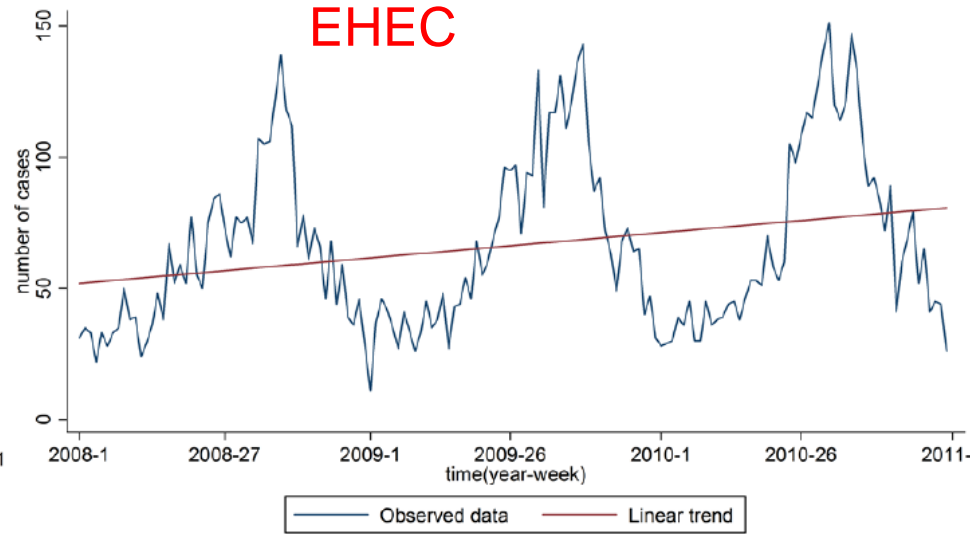
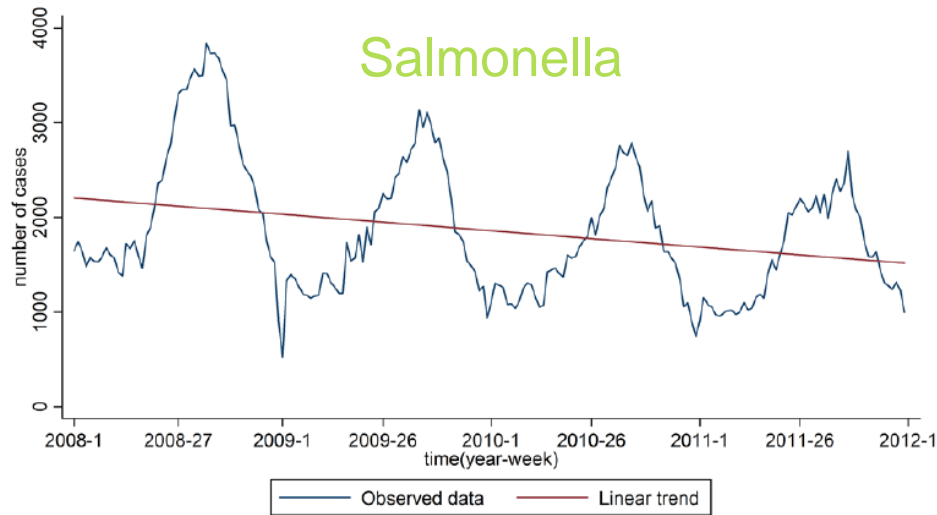


Figure LI1. Trend in reported confirmed cases of human listeriosis in the EU, 2008–2011

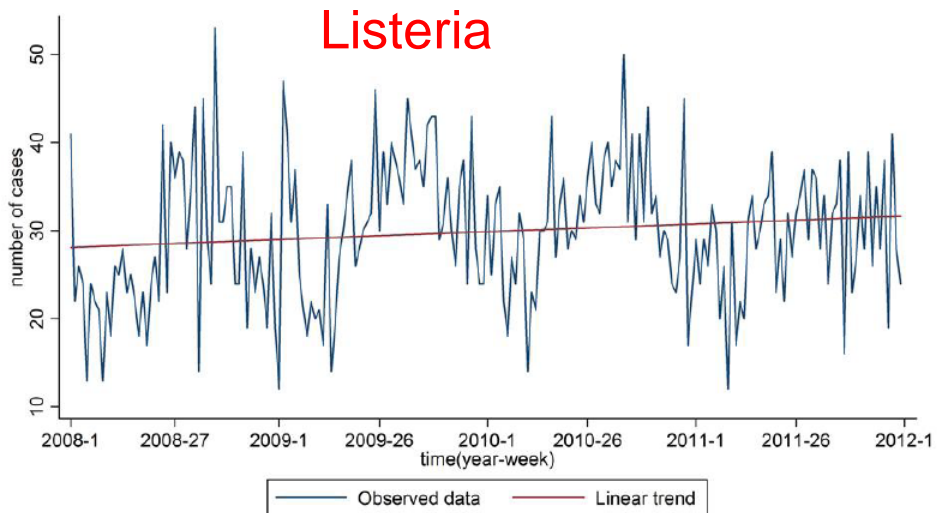
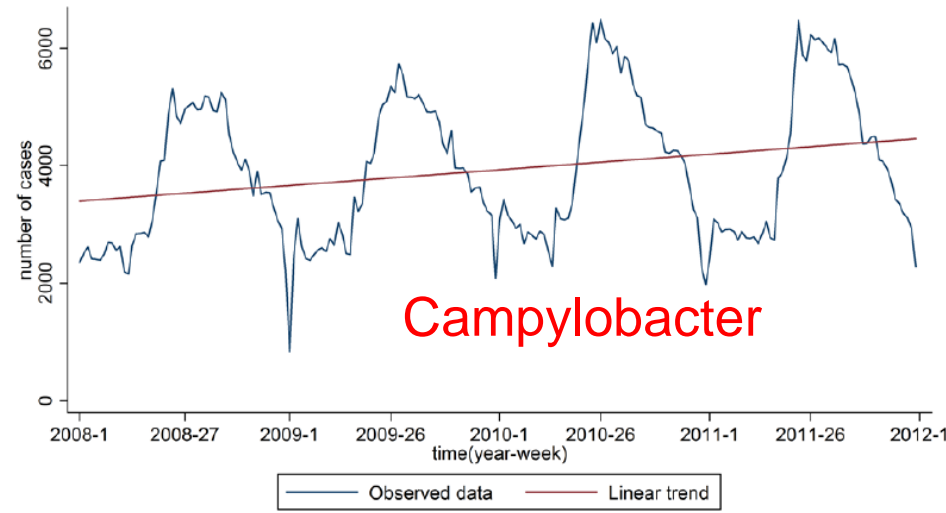
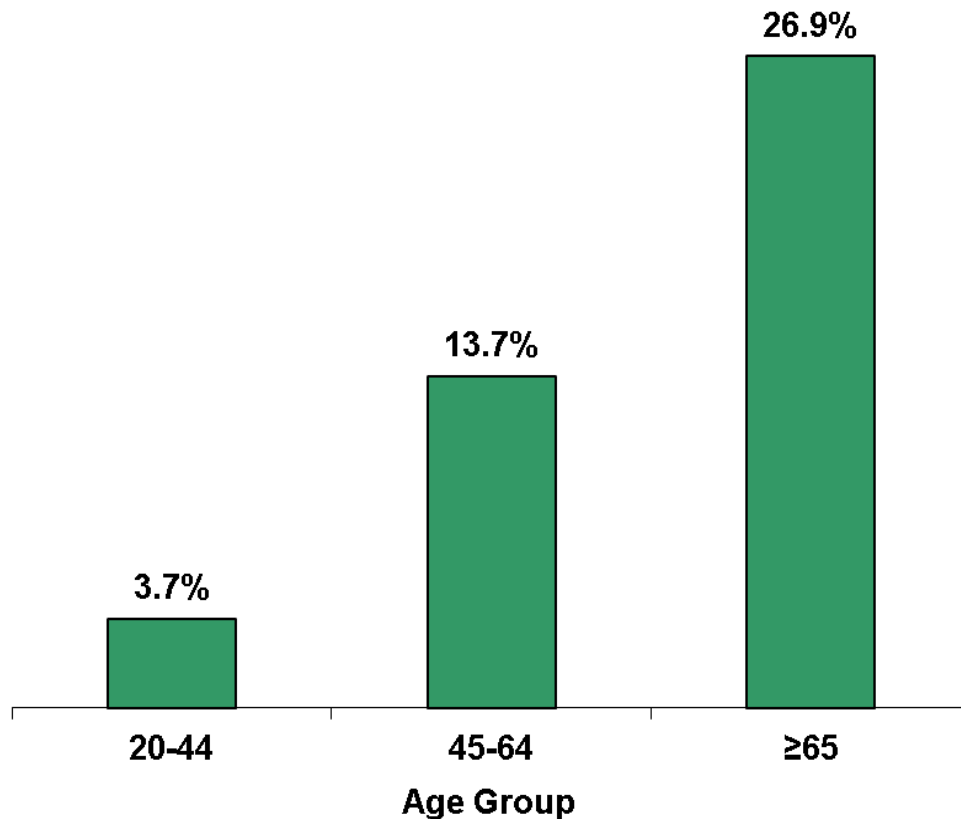


Figure CA1. Trend in reported confirmed cases of human campylobacteriosis in the EU, 2008–2011



# Estimated percentage of people aged 20 years or older with diagnosed and undiagnosed diabetes, by age group, United States, 2005–2008



The Year 2020:

40% of our consumers will be YOPIs

1. Diversify the shelf
2. Increase level of food safety

??

Source: 2005–2008 National Health and Nutrition Examination Survey.

CDC data 2005-2008: 35% of U.S. adults aged 20 years or older had (pre-)diabetes





**Your sausages could be stuffed with deadly  
SUPERBUGS - scientists issue warning over  
banger-based bacteria**

2015

# EU Wetgeving

## *Beleidsdocumenten Voedselveiligheid:*

*EU 2000*

*US 2000*

*China 2008*

- Verantwoordelijkheid (keten van) producenten
- Gebaseerd op wetenschap
- Risico analyse en HACCP



# Strategie

## Exposure??

1. Is er een relevante overdracht via vlees naar de mens?
2. Zijn onze medewerkers at risk?
3. Zijn professionals in de keten een relevante bron van verspreiding van het gevaar?

# Op naar de eerste resultaten....